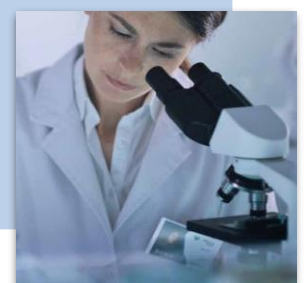
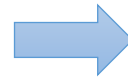




# Strategic research plan 2023-2025

*Research is future*

# HOW IT WAS BORN



## ARISLA MISSION

FUNDING RESEARCH ON ALS  
TO IDENTIFY NEW THERAPIES

## INTERACTION WITH OUR STAKEHOLDERS

SCIENTIFIC ADVISORY  
BOARD, SCIENTISTS,  
AND PATIENTS

## CONSIDERATION OF THE INTERNATIONAL CONTEXT

NINDS (US NIH) ALS  
STRATEGIC PLAN

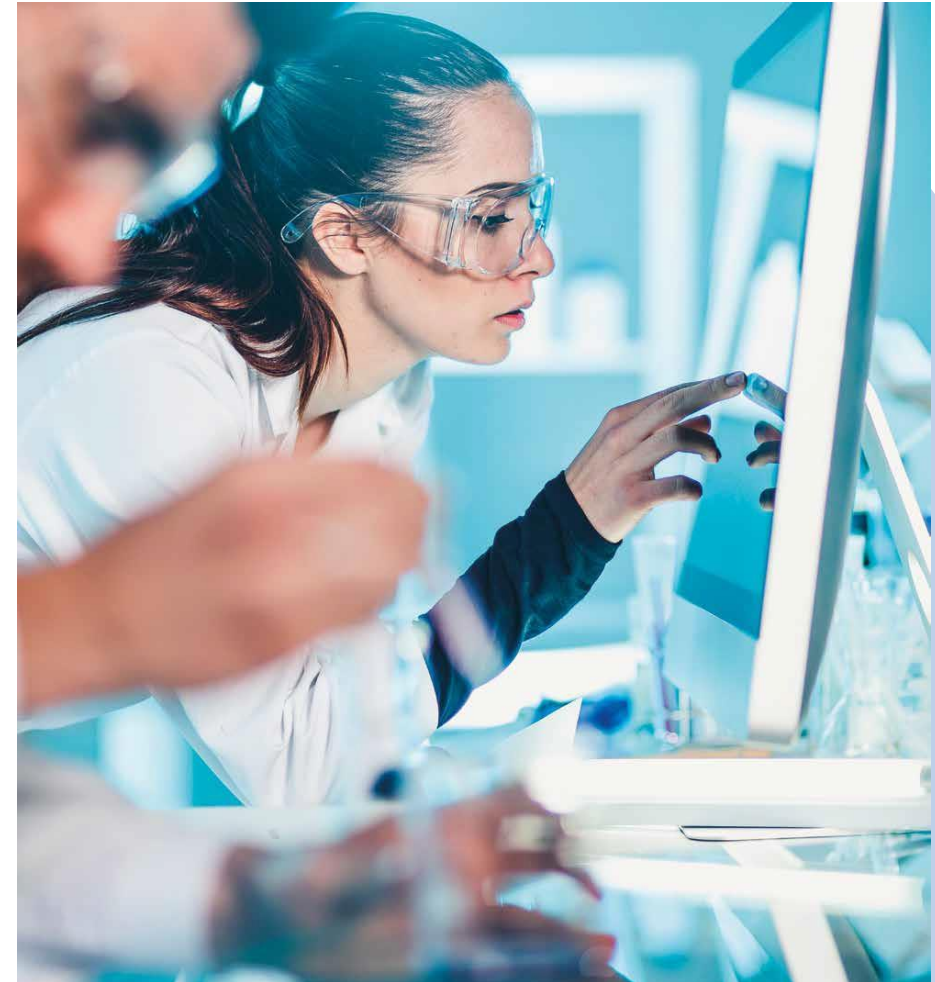
## NEW VISION

STEERING RESEARCH  
TOWARDS TRANSLATION  
AND GREATER CLINICAL  
IMPACT

# NEW VISION

## A 'CLINICALLY INFORMED' RESEARCH TO

- Support research that starts with patient characteristics to generate new results that have the potential to be translated into the clinic.
- Fund research that accelerate the diagnosis and the identification of effective interventions for the treatment and prevention of ALS.



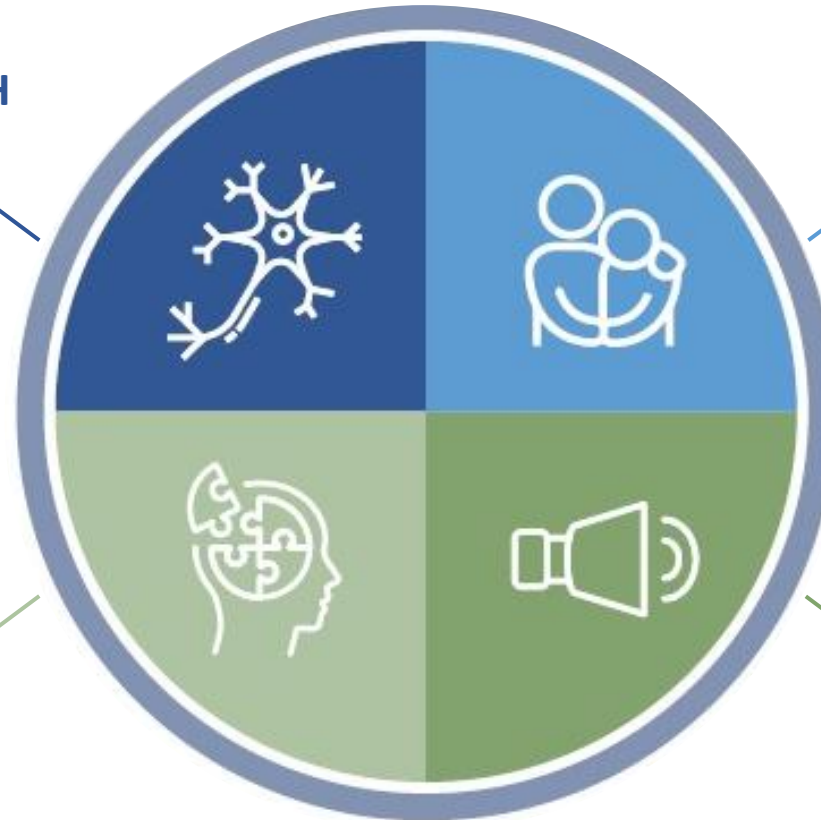


# OBJECTIVES

## SCIENTIFIC RESEARCH

1. Optimise **CLINICAL RESEARCH** and **ACCELERATE BASIC RESEARCH** to understand pathophysiology

2. Improve **QUALITY OF LIFE** of patients with ALS



3. Create new **PARTNERSHIP** opportunities between academia, associations and industry

4. Contribute to **SCIENTIFIC** and **LAY DISSEMINATION**

## RESEARCH SUPPORT

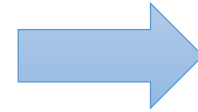
# SCIENTIFIC RESEARCH AND AREAS OF INTERVENTION

## WHAT WE WANT

1



To optimise **CLINICAL RESEARCH** and **ACCELERATE RESEARCH** on the underlying pathophysiology of ALS



## HOW



- New **PRIORITIES** in the annual call for proposals
- **COLLABORATION** between basic and clinical research

2



To improve the **QUALITY OF LIFE** of people with ALS



Clinical studies on **BIOMARKERS** to address patients' **CLINICAL ISSUES**

# 1) IMPACT ON CLINIC



We support **research** based on knowledge of **patient characteristics**



## NEW PRIORITIES WITHIN THE CALLS

We are directing research by highlighting specific topics, such as:

- Effective clinical measures and **biomarkers** of ALS diagnosis and progression
- **Natural history** of ALS
- **Mechanisms** underlying the **heterogeneity** of ALS
- New **disease models**

## INTERACTIONS BETWEEN SCIENTISTS AND CLINICIANS

We organise thematic workshops dedicated to **basic** and **clinical** scientists, to promote their interaction and steer fruitful discussion on relevant topics of common interest

## INNOVATIVE IDEAS

We encourage the involvement of **young researchers** and experts to bring in **new expertise** for the study of ALS, in particular through the **Pilot Grant programme**

## 2) IMPACT ON QUALITY OF LIFE



We invest our funds in clinical projects to improve **patient care management**



**2023-2025**

### **CLINICAL STUDIES ON BULBAR IMPAIRMENT**

During this three-year period, we are funding research projects to support clinicians to define the progression of the bulbar onset form, and **intervene earlier on associated symptoms**, including speech and swallowing problems.

In this context we are also funding new studies in our Laboratory to improve the clinical aspects of **metabolic changes** and their relationship to the clinical problems of dysphagia.

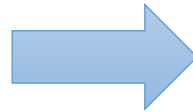
# SUPPORT TO RESEARCH

## WHAT WE WANT

3



To create new **PARTNERSHIP** opportunities between academia, associations and industry

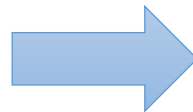


- National **SCIENTIFIC EVENTS** and thematic workshops
- National and international **ALLIANCES**

4



To strengthen our commitment to **SCIENTIFIC AND LAY DISSEMINATION**



**NEW** communication **INITIATIVES** to share research results



# 3) WORKING TOGETHER FOR IMPACTFUL RESEARCH



We believe in **sharing** information and **working together** to develop new solutions



## AriSLA CONGRESS

We encourage the participation of representatives from academia, associations, and industry at the AriSLA **Scientific Congress** to share the latest research on ALS and to foster **partnerships** between different stakeholders

## NATIONAL INITIATIVES

- We **raise awareness** of the importance of research on ALS and communicate the activities of AriSLA
- We **share goals** with other organisations to increase the impact of efforts to fight the disease

## INTERNATIONAL ALLIANCES

We participate in **international initiatives** to learn about activities in other countries and share common strategies

# 4) DISSEMINATION TO RAISE AWARENESS



We strive to ensure that everyone feels that they are an **active part of the research process**



## PROMOTION OF KNOWLEDGE ABOUT ALS

We maintain an **ongoing dialogue** with all stakeholders through the renewal and implementation of AriSLA communication tools:

- Institutional web site
- Social networks
- Social report book
- Newsletter

## INVOLVEMENT OF RESEARCHERS

- We carry out a **cycle of interviews** with clinical researchers to explain ongoing clinical trials in Italy and internationally
- We promote meetings open to local communities to increase knowledge of the work of the scientific community



---

***We trust in  
Research***

***because research is  
Future!***

**AriSLA ETS**  
Via Carlo Poerio, 14 – 20129 Milano  
02. 20242390

[arista.org](http://arista.org)